

**2006**

<b>4</b> .....	
<b>5</b> .....	
<b>6</b> .....	
<b>7</b> .....	
<b>8</b> .....	
<b>11</b> .....	<b>.1</b>
<b>15</b> .....	<b>:</b> <b>.2</b>
15.....	1-2
15.....	2-2
17.....	3-2
20.....	4-2
22.....	5-2
<b>23</b> .....	<b>.3</b>
23.....	1-3
23.....	2-3
26.....	3-3
30.....	4-3
33.....	5-3
36.....	6-3
39.....	7-3
<b>41</b> .....	<b>.4</b>

42.....	1-4
44.....	2-4
45.....	3-4
47.....	4-4
52.....	5-4
53.....	6-4
55.....	7-4
57.....	8-4
<b>58</b> .....	<b>.5</b>
58.....	1-5
58.....	2-5
58.....	3-5
59.....	4-5
59.....	5-5
<b>61</b> .....	
<b>67</b> .....	

**ERROR! BOOKMARK NOT DEFINED. :1**

18 .....	2000	17-5	:1-2
18 ....	2000	14-5	:2-2
20 .....	2000		:3-2
24 ..	2003	2001	: <b>1</b> -3
25 .....	2001		: <b>2</b> -3
27 .....	2001		: <b>3</b> -3
32 .....	2003		: <b>4</b> -3
32 .....	2003		: <b>5</b> -3
38 .....	2003		: <b>6</b> -3

27 .....	2001	:1 -3
29 .....	2001	:2 -3
30 .....	2001	:3 -3
31 .....	2001	:4 -3
33 .....	2001	:5 -3
34 .....	2001	:6 -3

35

(IPEC)



(182)

1999

.	.	.	.	.
.	.	.	.	.
.	.	.	.	.
.	.	.	.	.
.	.	:	.	.
.	.	.	.	.1
.	.	.	.	.2
.	.	.	.	.3
.	.	.	.	.4



2 1

-2004

4

3

2013

120

.5

.6

.7

---

ILO and Consultation and Research Institute, 2002. <sup>1</sup>

[http://www.nccm.org.eg/proj/childlabor\\_start.htm](http://www.nccm.org.eg/proj/childlabor_start.htm) <sup>2</sup>

.2005 <sup>3</sup>

<http://www.ilo.org/public/english/region/asro/newdelhi/ipec/download/india.pdf> <sup>4</sup>

(182)

:

1973 (138)

1999

()

()

()

()

()

.1

1989

6

5  
1973 (138)  
1999 (182)  
7

---

. 1991			5
. 1997	1973	(138)	6
. 2000	1999	(182)	7

1970

1966 (1)

(ILO)

1996 (8)





: .2

1-2

.

.

:

.

.

2-2

.

.

"

"

(138)

(182)

1973

1999

.

:

(182)

3

"

"

()

( )

( )

( )

.

3 ( )

: 4 .

-1

( ) 3

4 3

.1999

-2

-3

1

"

"

"

"

"

"

"

"



8	"	"	"	"	"
(138)	6	"	"	1973	
	14				:
					( )
					( )
					( )
					<b>3-2</b>
"	352	"	"	"	
"	"	"	246	"	
"	"	"	"	"	
				8.4	
					:
14-5	211			352	
					.2000

ILO, 2002, Every Child Counts: New Global Estimates on Child Labour, ILO, Geneva, pp. 15-29.<sup>8</sup>

2000	17-5		:1-2
(%)	( )	( )	
12.2	73	600	9-5
23.0	138	599	14-10
17.6	211	1,199	( )14-5
42.4	141	332	17-15
(23.0)	352	1,531	( )

127

(%15)

13  
.(%18)

2000	14-5		:2-2
(%)	( )		
2	2.5		
4	2.4		
19	127.3		

16	17.4	
29	48.0	( )
15	13.4	
(18)	211	( )

. :

:

1.2 : . 8.4 ( )

0.3 5.7

1.8

2000 :3-2

---

( ) ( )

1.2

5.7

0.3

1.8

0.6

( )

8.4

---

:  
:

%11

. 218 246 2004 2000

17-5

-5

.2004

126

%26

%33

14

9

**4-2**

:

---

9

:

:

.

.

.

.

.

0

.

:

:

%7.7

.

.

.

%2.8

10

.

.23-19

2001

10

:

:

**5-2**

**.3**

**1-3**

**2-3**

. 17-15

. %10

. 1-3

14

14

2003 2001

:1 -3

2003	2001	( )
9.4	9.5	14
11.8	12.6	14
15.1	17.9	15
26.4	29.2	16
37.3	30.8	17
100	100	

2001 : 2001 :  
 2003 : 2003

212

2539

%57

2-3

.%4

%8

%21

2539

212



2001

:2 -3

---

2003	2001
44.6	57.0
7.5	21.4
13.5	8.2
0.0	2.4
0.0	0.5
0.0	2.2
7.4	1.3
0.0	0.4
1.4	0.7
0.0	0.4
4.2	4.2
0.5	1.4
100	100

---

2001 : 2001 :

2003 : 2003 :

:

212

2539

1997 1992  
 .1997 %11.7 1992 %14.4  
 %3.2 1997  
 . %3.1  
 11  
 12 %33.1 1992  
 13 2002

---

.17	2002	11
.101	1992	12
.17	2002	13

%40

%10

%11

%17

.%6.7

%7

2001

:3 -3

---

40.0

10.0

16.7

( )

11.1

4.4

1.6

7.1

6.7

2.4

---

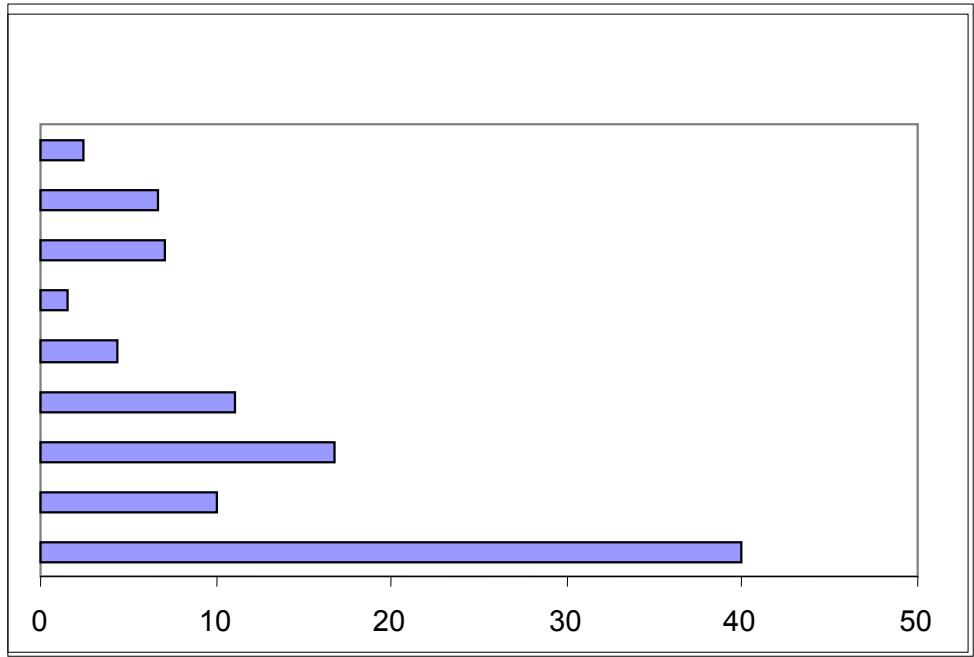
100

2001

:

2001

:1 -3



2001 :

-3

%30

.2

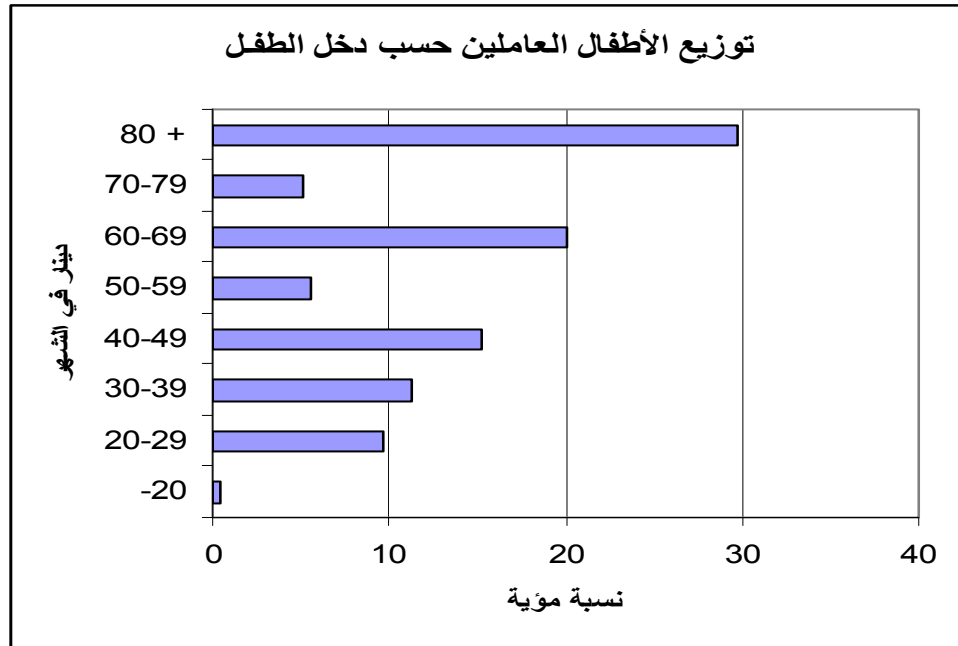
%70

%10

80

2001

:2 -3



2001

:

%6

100

300

%37

%60

4-3

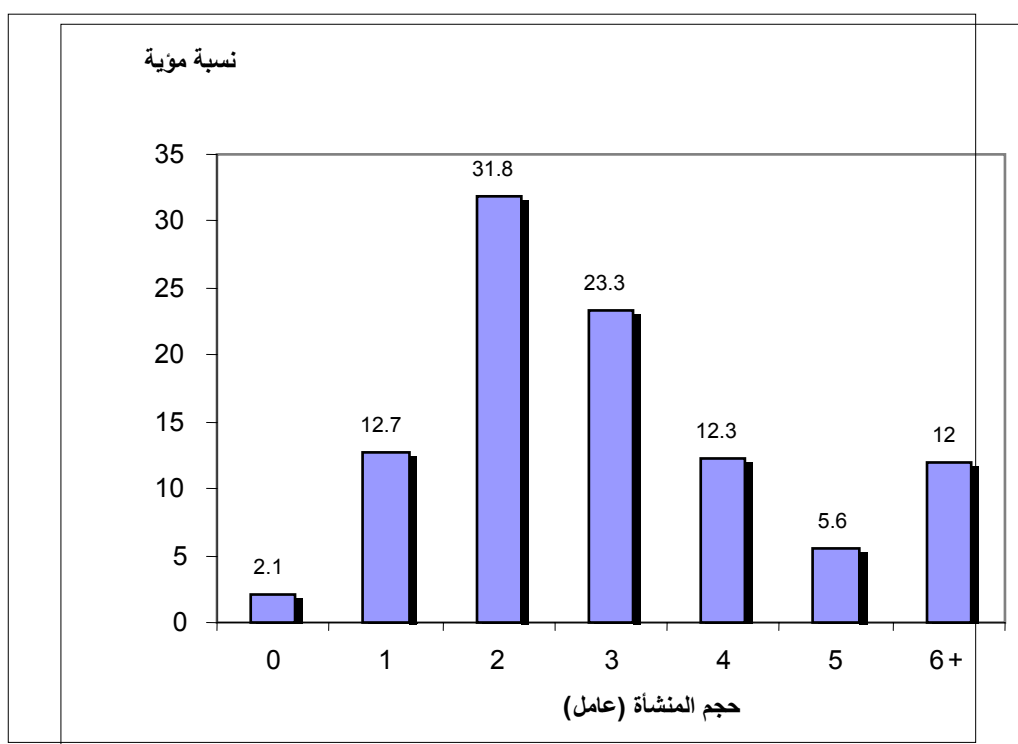
%88

.10

%94

2001

:3 -3

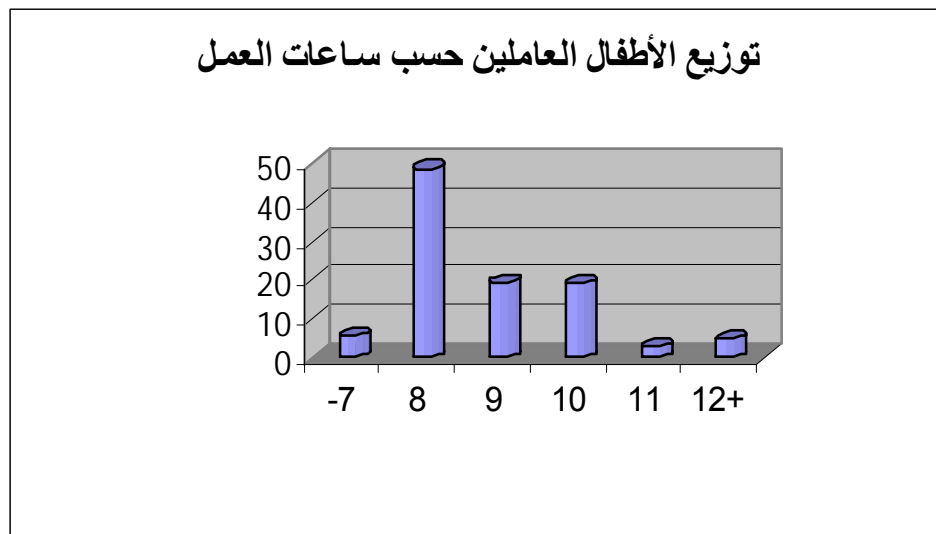


2001 :

%2

8 %54  
 9  
 11 %2.6 10 %19  
 12 %4.7

2001 :4 -3



2001 :

%61 %56  
 %6 4-3  
 %6

%8

2003

:4 -3

---

%		
56.4		
61.0		
48.8		
6.1	(	)
6.1	(	)
8.0	(	)

---

.	2003	:
.	212	:

2003

:5 -3

---

%		
27.2		
59.3		
13.5		
100.0		

---

.	2003	:
.	212	:





%52.7

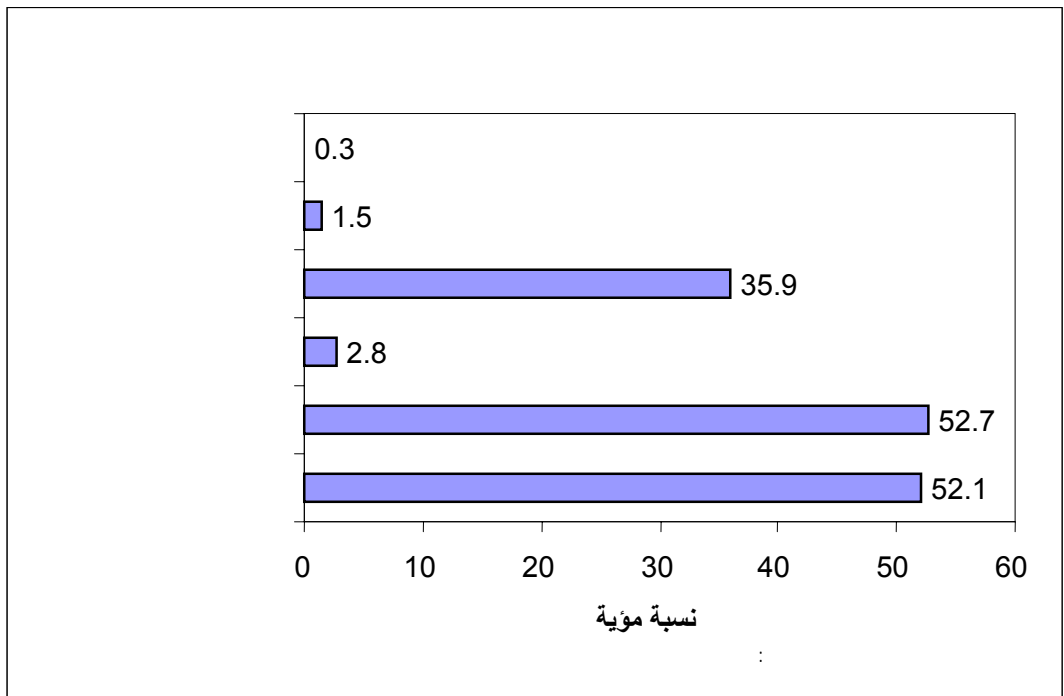
.%52.1

%35.9

%2.8

2001

:6 -3



2001

:

.%4

%63

%18

%64

%4

%37

%43

%1

%86

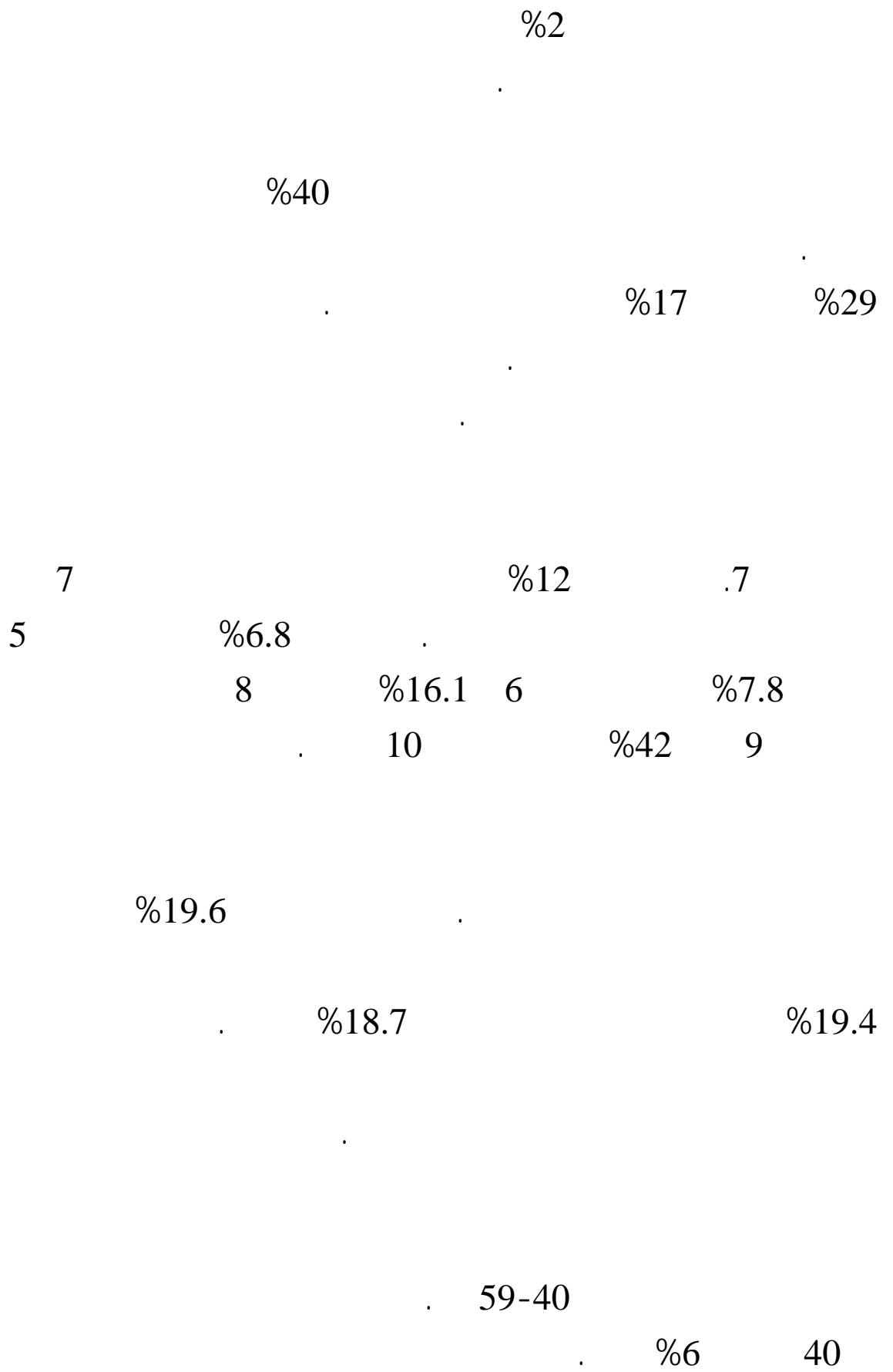
.%8

%5.5

%1

%12.2

%14



39-35 %21 44-40 %22 %28  
 34-30 .49-45 %2 30  
 . %8.1  
 %3  
 60  
 %9  
 60 25 %48 25  
 . 100 60 %36  
 %86  
 .6-3 %14  
 .

2003

:6 -3

---

50.0

35.8

13.6

0.6

---

---

100.0

---

2003

212

7-3

%1.2

8

%.011





.4

1999 (182)

1973 (138)

7 (182)

.

:

( )

( )

( )

( )

( )

.

1-4

1998

-1

-2

-3

-4

:

:

-1

-2

-3

-4

-5

-6

-7

**2-4**

15

%40

:

:

-1

-2

-3

:

:

-1

14

-2

-3

14

-4

-5

-6

-7

-8

**3-4**

(138)

(182)

( )

1996 (8)

:

:

-1

-2

:

:

-1

:

-2

-

-

( )

-

-

-



%0.39

<sup>15</sup>2000/1999

%0.73

<sup>16</sup>2002/2001

:

:

.1

:

.2

:

.3

:

.4

.16 1999/1998

.20 2003/2002

---

15

16



.

:

.5

:

- 
- 
- 

.

:

:

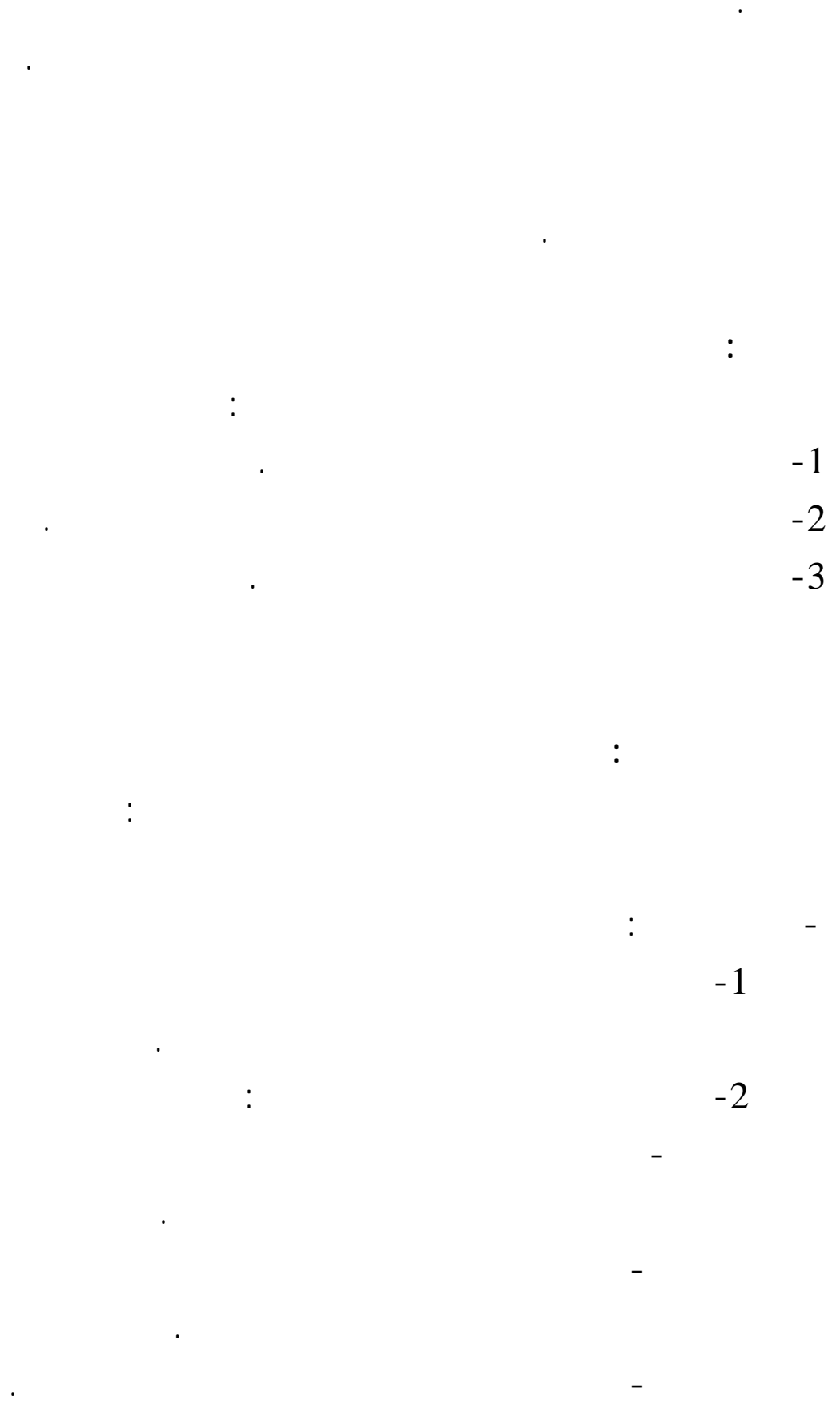
.

.

.

.

.







-3

-4

-5

-6

:

-

-

-

**6-4**

:

:

-1

-2

:

:

-1

-2

-3

-4

-5

-6

-7

-8

7-4

:

:

.1

.

.2

.

:

:

-1

.

-2

.

-3

:

.

.

.

.

.

.





**8-4**

:

:

-1

-2

:

:

.1

.2

.3

.4

**.5**

**1-5**

.1

.2

**2-5**

.1

.2

.3

**3-5**

.1

.2

.3

.4

.5

.6

.7

.8

.9

.10

**4-5**

.1

.2

.3

.4

**5-5**

( )  
( )



.					1999
		:			1997
					.
		:			2005
		.			
42-40	11	"	"		1997
					.157-150
.					2004
.					1992
.					1997
					2003/2002
					.
.	8-1				1999
-77	20				1997
					.36-26 79

1999

1999/10/13-11

1995

1993/1992

1998

1999

1999

2005-2000

1997

2013-2004 : 2005  
2001 2005  
1992  
2001 2001  
2005-1991 2002  
16 : 1996 .12  
138 1973  
182 1999

1993

1991

:

1998

.1

2000

( )

1995/1994

.

1996/1995

.

1997/1996

.

1998/1997

.

1999/1998

.



2000/1999

.

2001/2000

.

2002/2001

.

2003/2002

.

2004/2003

.

2005/2004

.

:

2002

.

2001

.

1990

"

"

.

Bartlett, S., 1999, *Cities For Children: Children's Rights, Poverty, and Urban Management*, London.

[http://www.nccm.org.eg/proj/childlabor\\_start.htm](http://www.nccm.org.eg/proj/childlabor_start.htm). (Accessed on 23 February 2006).

<http://www.ilo.org/public/english/region/asro/newdelhi/ipec/download/india.pdf>. (Accessed on 23 February 2006).

<http://www.ilo.org/public/french/standards/ipec/about/globalreport/2006/index.htm>. (Accessed on 12 June 2006).

Ibrahim, R., 2000, *Child Labour in Jordan: Between the Informal Market and Regulation*, unpublished M. A. Thesis, University of Jordan, Amman.

ILO, 1998, *Child Labour: Sixitem On the Agenda: Report Vi (1)*, Geneva.

ILO, 2001, *Eliminating the Worst Forms of Child Labour: An Integrated Time-Bound Approach*, ILO, Geneva.

ILO, 2002, *Every Child Counts: New Global Estimates on Child Labour*, ILO, Geneva.

ILO and Consultation & Research Institute, 2002, *Child Labor in Lebanon: Present Situation and General Recommendations for a Future National Policy*, Unpublished Report, Beirut.

Lim, L. L., 1996, *More and Better Jobs for Women: An action guide*, ILO, Geneva.

Rodgers, G, and Standing, G., 1981, *Economic Roles of Children in Low-Income Countries*, *International Labour Review*, 120, (1): 30-47.

Tarawneh, M. 2002, *Poverty and Child Labor in Jordan: Anthropological Study*, Centre for Strategic Studies, University of Jordan, Amman.

Unicef, 1997, *Strategies for Eliminating Child Labour: Prevention, Removal and Rehabilitation: Synthesis Document*, Geneva.

UNICEF, 2001, *The State of the World's Children 2001*, UNICEF, Geneva.

UNICEF, 2005, *The State of the World's Children 2006: Excluded and Invisible*, UNICEF, Geneva.

:2-1

			/

: "

"

:

.2002

:2-1

			/
	9		
	( )		

:3-1

			/
	9		

.

:

( ) :4-1

			/
	3		
	3	:	
		:	

: " " -1  
24 14 " " -2  
" " .  
" " -3  
. 18 10

:5-1

			/
	3		



:6-1

			/

:7-1

			/
	3 ( )	:	
	3 5 ) (	:	
	6		
	9		
	6		